



# Pit jack 15 000 kg PK15L



- Built in air pump
- Dual pump lifting system
- 2 lowering speeds
- Integrated air hydraulic pump
- Modular system

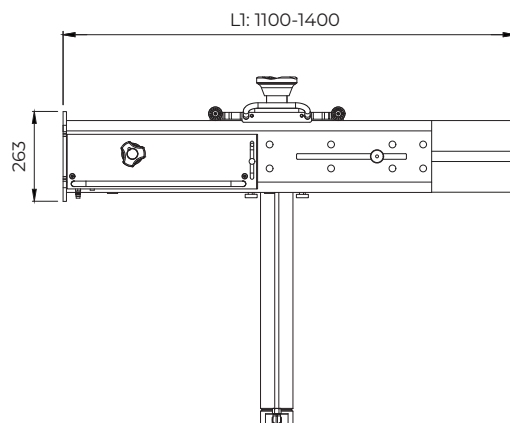
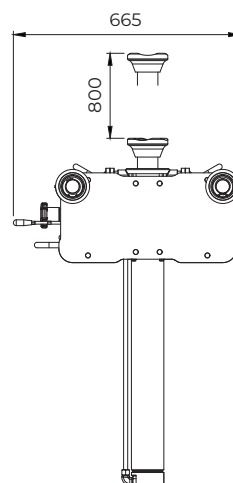


## Technical specifications

Capacity	15 000 kg
Required air pressure	7.5 t/m 12 Bar
Stroke	800 mm
Min. Height	1020 mm
Max. Height	1820 mm
Width	1100 tot 1400 mm
Depth	665 mm
Weight	280 kg

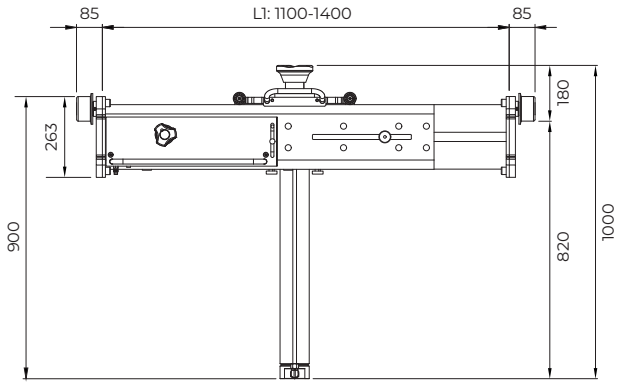
**NB! The pit jack is supplied without adapter plates! See back cover for more information.**

## Dimensions

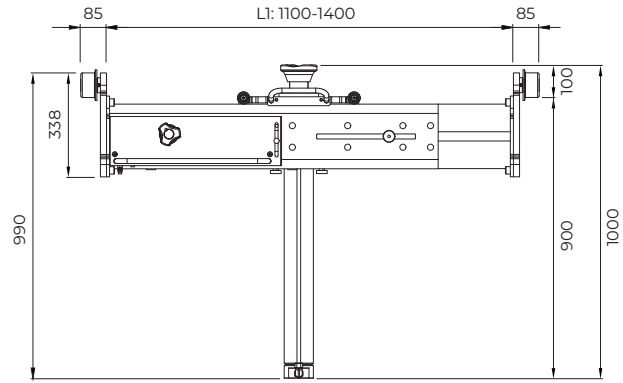


## Wide Select the adapter plate size

Use the dimensional drawing below and the type of rail to determine which adapter plates are most suitable.



Pit jack dimensions with short adapter plates



Pit jack dimensions with long adapter plates

## Rail

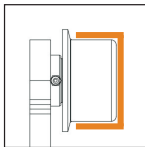


Cylindrical rail



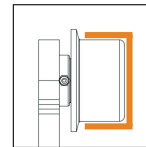
Conical rail

## PK01A Short plate cylindrical wheels



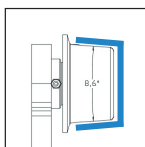
Cylindrical wheel

## PK02A Long plate cylindrical wheels



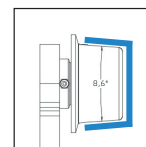
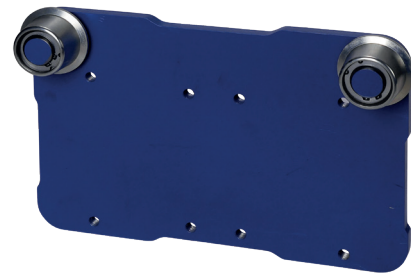
Cylindrical wheel

## PK03A Short plate conical wheels



Conical wheel

## PK04A Long plate conical wheels



Conical wheel